

Main Specifications

Model	C200 SE+	C200+	C200 Pro+
Infrared Resolution		256 × 192	
Infrared Frame Rate		25Hz	
Pixel Pitch		12μm	
Thermal Sensitivity		<40mK	
FOV		56° × 42°	
I FOV		3.8mrad	
Minimum Imaging Distance		0.1m	
Focusing Mode		Focus-free	
Visible Light			200W
Temperature Analysis	Central / Highest / Lowest temperature point		Central point/highest temperature point/lowest temperature point/3 customized points
Measurement Range (Automatic Added)	Low temperature range: -20°C~+150°C High temperature range: 100°C~400°C Automatic	Low temperature range: -20°C~+150°C High temperature range: 100°C~550°C Automatic	
Measurement Accuracy	±2% or ±2°C (the larger one shall prevail)		
Measurement Unit	Celsius, Fahrenheit, Kelvin		
Emissivity Settings	0.01-1.0 adjustable, step size: 0.01		
Screen	2.8 in. LCD (320×240) screen brightness 500nit		
Image Mode	Infrared	Infrared, dual-spectrum fusion, visible light, PIP	
Palettes	White hot, black hot, iron red, rainbow	White-hot, black-hot, lava, iron red, rainbow, high-contrast rainbow, black red	
Super Resolution	Supported on the PC client		
Digital Zoom	2×/4×		
Timed Photographing	Supported (including temperature data)		
Video Taking	Supported (MP4, OSD)		
Temperature Alarm	Highest/lowest temperature alarm in full frame area		
Alarm Type	Image pop-ups, flash prompts		
Auto Snapshot at Alarm	Supported (including temperature data)		
Language	English, Japanese, Poland, Russian, Korean, Hungarian, Bap, German, French, Spain, Italy, Turkey, and Traditional Chinese		
Video Transmission	UVC wired screen projection and real-time analysis (for C200+ and PRO+ only)		
PC-End Analysis Software	Supported		
Mobile App			Supported
Auto Shut-Down	Adjustable (automatic shutdown, 5 min, 10 min, 20 min)		
Screen-off	Screen on/off with short press of the power button		
Shutdown Duration	2S		
Startup Duration	~6s		
Memory Card	32GB MicroSD card, expandable to 128GB		
Fill-in Light	Lighting and flash modes		
Shutdown Charging Display	Supported		
Charging Time	4 hours if it is shut down		
Operating Time	15H		
Wi-Fi			UVC screen projection, wireless screen projection (excluding temperature data)
Tripod Mounting Hole	Supported		
Weight	520g		
Dimensions	237mm × 75mm × 92mm		
Operating Temperature	-10°C to +50°C		
Storage Temperature	-20°C to +60°C		
Relative Humidity	10%~95%, non-condensing		
IP Grade/Drop Protection	IP54 2m		
Packing List	USB cable, 32GB SD card, user manual, storage bag, certificate of qualification, calibration certificate		



IRay Technology Co., Ltd.

Tel: +86-400-998-3088 Website: www.iraytek.com

Address: 11 Guiyang Street, YEDA, Yantai 264006, P.R.China

Email: sales@infiRay.com Fax: +86-0535-3410604

· The manual is for illustrative purposes only. The images and technical specifications are subject to change without notice.

Distributors authorized by InfiRay:

Sample code: DY2023Y001- C200 SE+ / C200+ / C200Pro+ Print on: July 2023

Tianshu C200+ Series

Handheld Thermal Camera

Full capacity: clearer images and faster operation





The Tianshu C200+ series handheld thermal camera, with a 40mK high-sensitivity 256×192 infrared detector, combined with the Matrix IV intelligent image algorithm, offers you clearer and cleaner thermal images.

For full productivity, the product is equipped with intelligent professional features such as a new 500nit sunlight screen, automatic range, 2×/4× digital zoom, built-in video taking, and Wi-Fi screen projection*, bringing users a smoother work experience with clearer images and more powerful performance.

*For C200Pro+ only

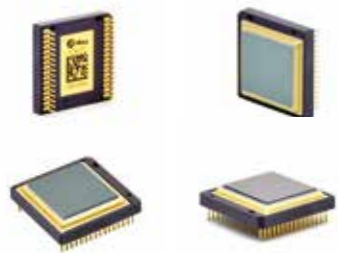


1 Better Images

Distinguish smaller temperature differences and more details

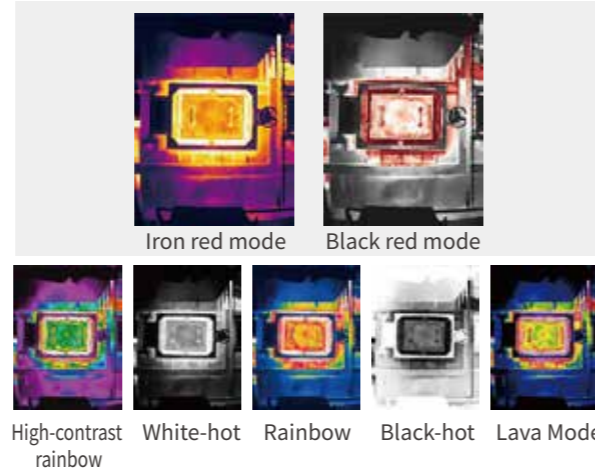
• High-Sensitivity 256-Pixel Detector

- 40mK professional-grade high sensitivity to capture smaller temperature differences
- 12μm 256×192 infrared detector, featuring low power consumption and small size



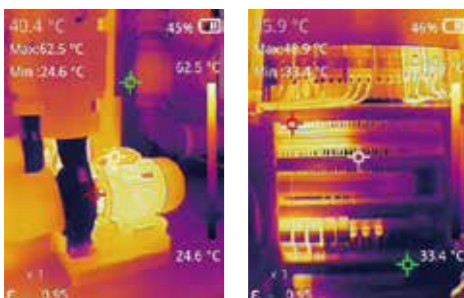
• Rich Image Mode

5 image modes + 7 palettes * Only infrared mode and 4 palettes for the C200 SE+



• AI-based New Image Algorithm

Driven by a brand new CPU, the product uses Matrix IV—the new fourth-generation infrared image processing algorithm—to generate AI-based thermal images, making object details clearer and images cleaner.



• Brighter Screen

Newly developed 500nit sunlight screen, for easier observation in bright environments

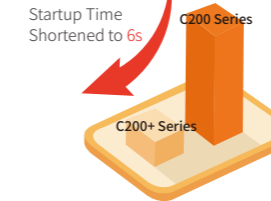


2 More Features

Professional grade, full services based on thermal sensors, catering to all industrial control scenarios

• More Smooth

Based on the newly developed CPU, with a shorter startup duration of 6S, and smooth operation response



• New Features

Automatic Temperature Adjustment
Easy and simple, suitable for more scenarios

Built-in Video Taking
Easy for later analysis and recording

Digital Zoom
2× or 4× zoom
Easier to observe smaller or farther objects

WiFi Connection and Projection (C200Pro+ only)
Quick viewing and sharing on mobile devices
Quick analysis on mobile apps

4 Higher Performance

Rugged, easy to use, and quick to deploy

- Newly developed TPU material
More wear-resistant



- IP54, waterproof and dustproof
2m drop protection



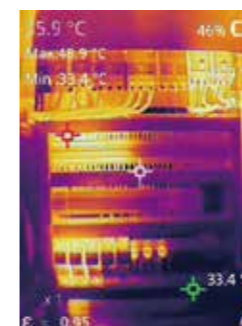
- 15-hour battery life
Shutdown Charging Display



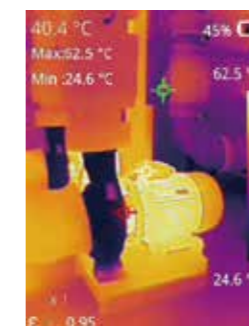
- 32GB memory card
Expandable to 128GB



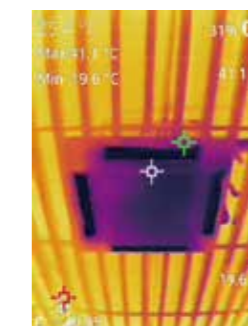
Application Fields



Electrical maintenance



Equipment inspection



HVAC leak detection



Automotive maintenance

3 More Software

Complete software PC client and App

As a basic series, the product also features a complete set of secondary analysis software for PCs and thermal image transmission & analysis applications for mobile devices.

