

## The Automatic charging and discharging test of Energy Storage Device (LinkVleW)

GW Instek introduces LinkVleW software to allow users to quickly set test instruments for the operation of charging and discharging tests on battery and super capacitor, etc. Users can define charging and discharging procedures to automatically execute procedures so as to obtain measurement results. History graphs are available and they can be exported to Excel for further analysis.

Features:

Long Term Power Monitoring of I, V, P(W)

Create/define operation sequence for controlling Source/Load behavior.

Simultaneously run test sequence of each channel and data logging

Data Analyzer:

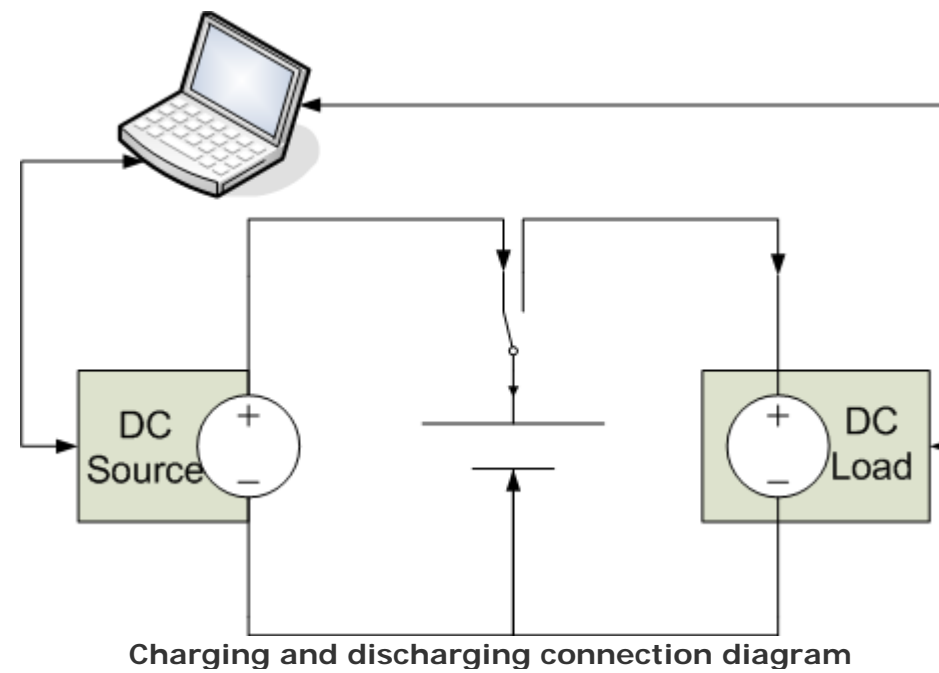
VleW chart: support Zoom In/Tracking of Samples

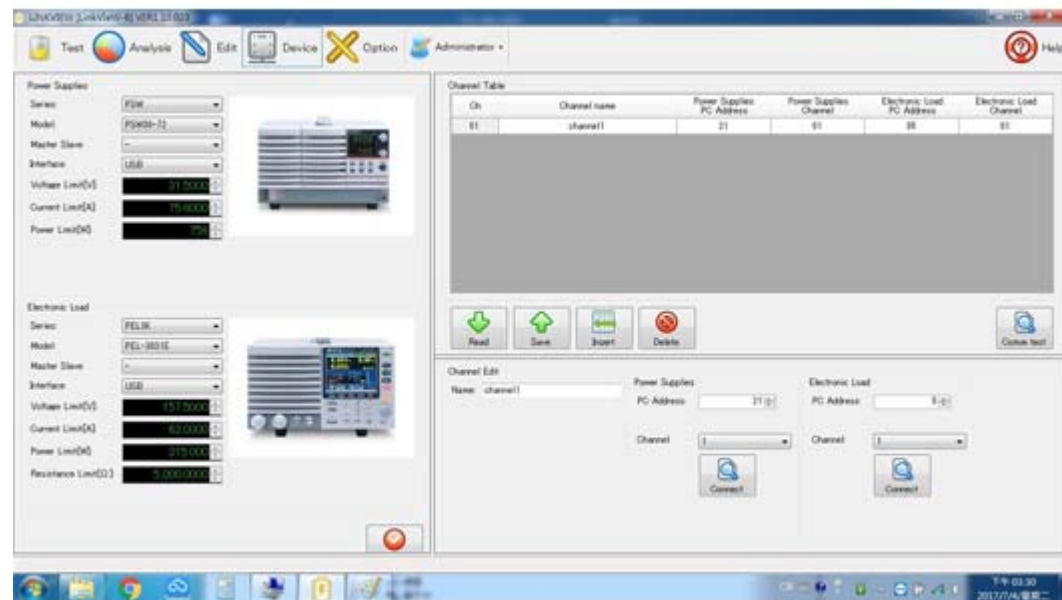
VleW table: summaries testing result for VleW and also each step including Voltage/Current/Power/VMax/Imax/PMax/AmpHour

Live Data Monitoring:

VleW: Self-defined display range/offset adjustable

Controllable displayed curve





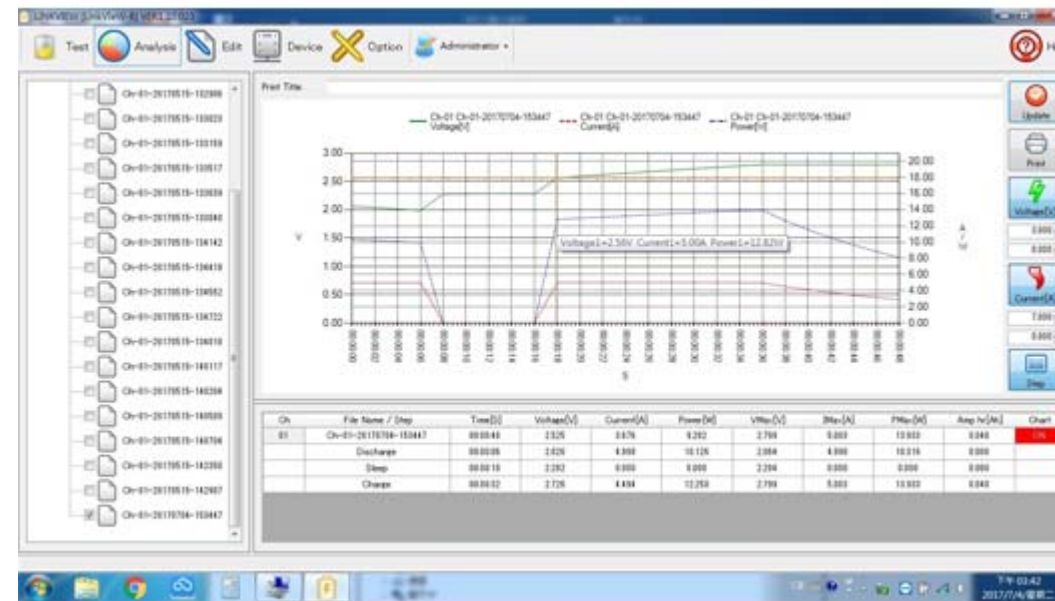
Power supply/load setting



Charging and discharging procedure editing



Measurement and analysis displays (Support Zoom in and measurement tracking)



**Data Analyze/ Point and View/ Zoom-In/ Zoom Out/ Mnemonics display of testing steps/ Testing parameter View display of each step**

Spec.:  
 Support up to 12 channels/pattern.  
 Support up to 100 patterns (sequence).  
 Sequence steps: 1000 steps  
 Minimum record period: 1s.  
 Maximum step time: 100 Min.  
 Maximum repeat cycles: 65535 cycles.  
 Output w/ CSV file.

Support:  
 Programmable DC-Power supply: PSU/PSW/PSB series  
 Programmable DC-Load: PEL-2000/PEL-3000 series

### List of supporting LinkView

[PSW-Series](#)

Multi-Range Switching D.C. Power Supply

[PSU-Series](#)

Programmable Switching D.C. Power Supply

[PSB-2000 Series](#)

Multi-Range Switching D.C. Power Supply

[PEL-3000 Series](#)

High Power Programmable D.C. Electronic Load

[PEL-3000E Series](#)

Single Channel Programmable D.C. Electronic Load

[PEL-2000A Series](#)

Multi-Channel Programmable D.C. Electronic Load

Download

<a href="#">Download</a>	LinkVleW Application software(Free of Charge)
<a href="#">Download</a>	LinkVleW Software manual