

PC210 Tool-Like Thermal Camera

Clearer And Longer Operating, Making Your Work Easier



Introduce

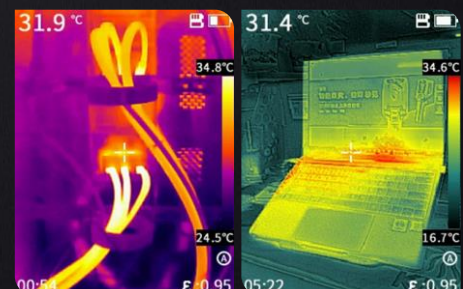
PC210, Tool-like Handheld Thermal Camera, With excellent performance in image quality and charging battery life, This Thermal Camera adopts 256x192 IR Detector and 200W pixel visible light. Adopts the New SharpIR composite image enhancement technology, it can provide you with detailed infrared thermal imaging and dual-light fusion images to help you find potential faults more quickly.

Features and Benefits

- Adopts 256x192 infrared module with Excellent imaging quality
- 16H Operating time, 2.5H fast charge, easy to cope with two days of work
- Turn on in 1 second And Use, full-frame temperature measurement
- Rugged and Durable, Resistant to 2 meters drop, IP54 Protection Rating
- 4 Color Palettes, And all palettes can display the temperature
- Wide temperature measurement range, -20°C~550°C, Automatic Switch
- Type C interface, Easy to transfer data And support PC screen projection

Application

- Building Diagnostics
- HVAC Inspection
- Facilities maintenance
- Electrical Application



Specifications

Model	PC210
IR image & Optical	
Detector type	256×192@12μm, VOx
Spectral	7.5~14μm
Frame Rate	25Hz/9Hz
Thermal Sensitivity / NETD	45mK
Focal Length	3.2mm
Field of view(FOV)	56°×48°
Spatial Resolution(IFOV)	3.75mrad
Min focus distance	0.3m
D:S	130:1
Focus	Focus-free
Visible Camera	
Visible Camera Resolution	200W pixel, Resolution optional (240×320/1600×1200)
Flashlight	Yes
Image Display	
Display	2.4" LCD screen
Display Resolution	240×320
Image Model	IR, Visible, Picture-in-Picture, MIF
Color Palettes	6:White Hot, Iron Red, Hot Iron, Arctic, Rainbow 1, Rainbow 2
Temperature Measurement	
Temperature Range	-20°C-150°C, 100°C-550°C (Auto switching)
Accuracy	±2°C or ±2%, whichever is greater (target temp ≥0°C, ambient temp is 5°C ~ 30°C)
Measurement Spot	Center spot
Measurement Area	3(incl. max & min temp)
Auto Hot & Cold Spot Tracking	Yes
Alarm	Full Screen Max & Min Spot Alarm,Support Image and flash light Alarm
Image Storage	
Storage Media	TF card (Standard 16G, up to 32G)
Image Format	IR/MIF/PIP Image Format:Jpg format with temperature data (256*192) ;Visible light image format: jpg format without temperature data (240*320)
Connections & Communications	
USB	TYPE-C, TF Card slot
Laser	Yes
Tripod interface	Yes
PC IR Analysis Software	Yes
Power System	
Battery Tpye	Rechargeable Li ion battery
Battery Operating Time	16 hours
Charging Time	Internal charge, ≤2.5 hours
Environmental Parameters	
Operating Temperature	-15°C~50°C
Storage Temperature	-40°C~70°C
Encapsulation	IP54, 2-meter drop test
Certification	CE/ROHS/FCC/PSC/KC/UN38.3/IP54
Weight	about 375g
Size	194mm×61.5mm×76mm
Standard Accessories	Charger + Adapter, TYPE-C USB cable, Wrist Strap, Quick start Guide, Data Download Card, 16G TF Card

