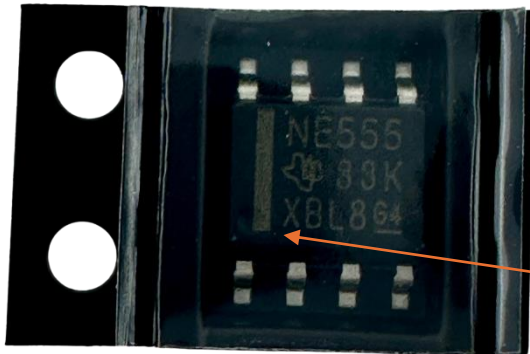


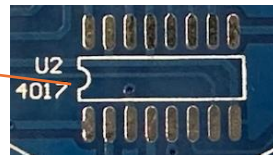
Contents + Quick guide SMD training kit for hand soldering: 125 pcs



1x Single precision timer (IC)
On the PCB: U1
Pay attention to the orientation:

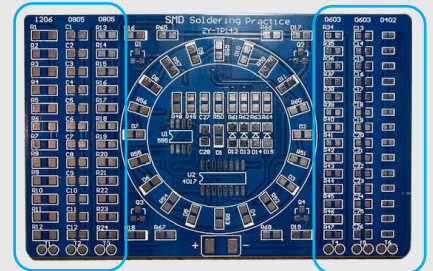


1x Decade counter (IC)
On the PCB: U2
Pay attention to the orientation:



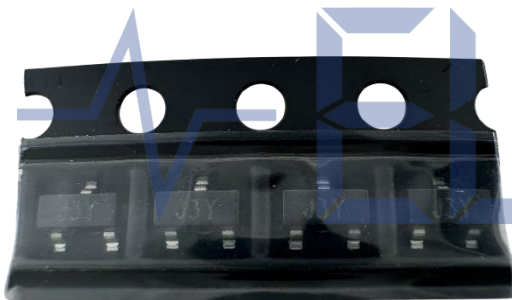
General disclaimer:

The values of the practice area components in your package might be different than the ones in the picture. Only the size of the SMD component is important for this area, the specific values can vary. How many resistors, capacitors or LEDs you get can also vary because spares are supplied but it will always be the minimum indicated in this document.

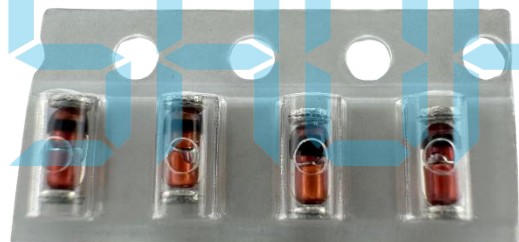


Practice area

Practice area



4x J3Y triode transistor
On the PCB: Q1-Q4



4x Diode
On the PCB: D12-D15



15 (or more)
0805 size resistor
On the PCB:
R50-R60/R65-R68



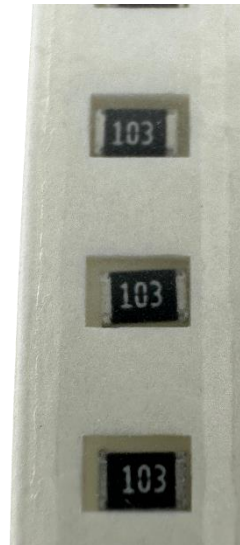
12x (or more)
1206 size resistor
On the PCB:
R1-R12



15x (or more) LEDs
On the PCB:
D1-D11/D16-D19



12x (or more)
0805 size resistor
On the PCB: R13-R24



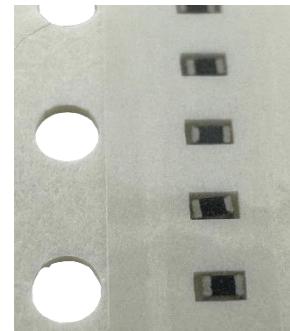
5x (or more)
0805 size 10kΩ resistor
On the PCB: R48/R61-R64



14x (or more)
0603 size
resistor
On the PCB:
R34-R47



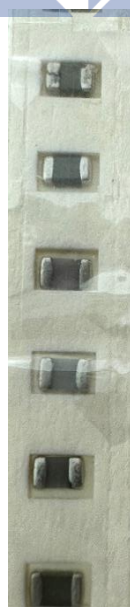
1x (or more)
0805 size 2MΩ resistor
On the PCB: R49



14x (or more)
0402 size resistor
On the PCB: rightmost column



2x 0805 size
0.1uF capacitor
On the PCB:
C27-C28



12x (or more)
0805 size
capacitor
On the PCB:
C1-C12



14x (or more)
0603 size capacitor
On the PCB:
C13-C26