



www.jbctools.com

INSTRUCTION MANUAL



CL6220

Metal Brushes with Clip for Compact
Stations & Manual Tip Cleaner

This manual corresponds to the following reference:

CL6220

Packing List

The following items are included:

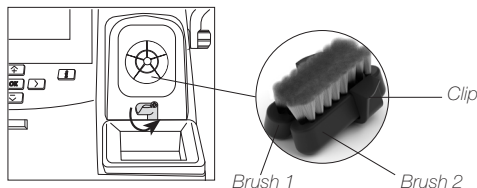


Metal Brushes 2 units
Ref. CL6220

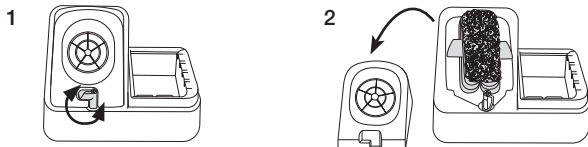


Manual 1 unit
Ref. 0010369

Metal Brush replacement in Compact Stations



Metal Brush replacement in CL Manual Tip Cleaner



Optional Cleaning Products



CL6205
Inox Wool



TT
Tip Tinner



Sand
Ref. CL6211



Brass Wool
Ref. CL6210



Sponge
Ref. S0354



Metal Brush
Ref. CL6217

Specifications

CL6220

**Metal Brush with Clip for Compact Stations & Manual
Tip Cleaner**

Ref.: **CL6220**

- Weight: 12 gr / 0.002 lb
- Dimensions: 45 x 60 x 31 mm / 1.77 x 2.36 x 1.22 in

Complies with CE standards.
ESD Safe.

JBC

Warranty

JBC's 2 year warranty covers this equipment against all manufacturing defects, including the replacement of defective parts and labour.

Warranty does not cover product wear or misuse.

In order for the warranty to be valid, equipment must be returned, postage paid, to the dealer where it was purchased.



This product should not be thrown in the garbage.

In accordance with the European directive 2012/19/EU, electronic equipment at the end of its life must be collected and returned to an authorized recycling facility.



www.jbctools.com